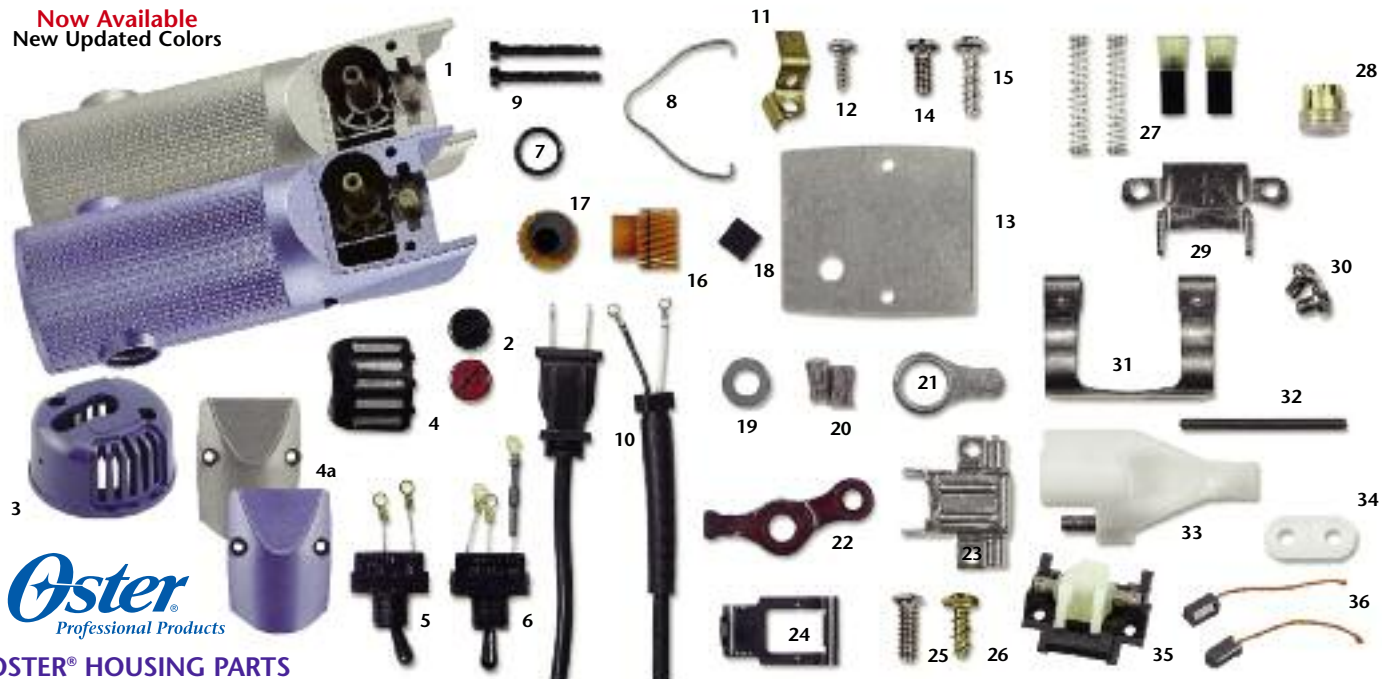


Now Available
New Updated Colors



OSTER® HOUSING PARTS

| DESCRIPTION | BLACK | BURGUNDY | SILVER 1sp | DRK GREY 2sp | DRK BLUE TURBO 1sp | Lt BLUE TURBO 2sp |
|---------------------|--------------|--------------|------------------|------------------|--------------------|------------------------------|
| 1 HOUSING | OP057022-000 | OP057022-005 | OP108692-110 | OP108692-120 | OP108692-130 | OP108692-140 \$21.50 |
| 2 BRUSH CAP | OP111012-010 | OP111012-020 | OP111012-010 | OP111012-010 | OP111012-080 | OP111012-090 .42 |
| 3 SWITCH CAP | OP108780-010 | OP108780-020 | OP108780-010 | OP108780-010 | OP108780-080 | OP108780-090 2.59 |
| 4 CAP SCREEN VENT | OP111013-010 | OP111013-020 | OP111013-010 | OP111013-010 | OP111013-080 | OP111013-090 1.28 |
| 4a COVER PLATE HOOD | OP115286-010 | OP115286-020 | OP115286-010-599 | OP115286-010-699 | OP115286-010-799 | OP115286-010-499 2.29 |

OSTER® SWITCH PARTS

| | | |
|-----------------|-------------------------|--------------|
| 5 OP104365-000 | 1 SPEED SWITCH | \$.13 |
| 6 OP058172-005 | 2 SPEED SWITCH | 5.90 |
| 7 OP041683-000 | SWITCH NUT | .45 |
| 8 OP042573-000 | HANGER BAILE | 1.54 |
| 9 OP042574-000 | SWITCH CAP SCREW | .40 |
| 10 OP110737-000 | CORD 1 & 2 SPEED | 4.52 |
| 11 OP058355-000 | TERMINAL BRACKET | .22 |
| 12 OP042113-015 | TERMINAL BRACKET SCREWS | .22 |

OSTER® GEAR/HINGE PARTS

| | | |
|-----------------|-----------------------------|--------------|
| 13 OP115544-000 | CAPTURE PLATE | \$.89 |
| 14 OP041664-000 | FACE PLATE SCREW | .29 |
| 15 OP106942-000 | FACE PLATE SCREW (SELF TAP) | .29 |
| 16 OP058908-000 | 1 SPEED GEAR | 14.04 |
| 17 OP105520-000 | 2 SPEED GEAR/TURBO GEAR 1/2 | 14.19 |
| 18 OP042566-000 | THRUST PLATE | .29 |
| 19 OP058543-000 | GEAR WASHER | .29 |
| 20 OP041723-000 | GREASE SEAL | .33 |
| 21 OP045515-000 | LINK | 1.94 |
| 22 OP044946-005 | LEVER | 2.71 |
| 23 OP044941-000 | HINGE ASSEMBLY | 5.68 |
| 24 OP044938-000 | BLADE LATCH | 2.42 |
| 25 OP041665-000 | HINGE SCREW | .29 |
| 26 OP109189-000 | HINGE SCREW (SELF TAP) | .29 |

OSTER® BRUSH/SPRING PARTS

| | | |
|--------------------------|----------------------------|---------------|
| 27 OP042584-025 | BRUSH/SPRING SET | \$3.19 |
| 28 OP042614-000 | BRUSH RETAINER | 1.76 |
| OSTER BLADE PARTS | | |
| 29 OP044936-000 | BLADE SOCKET | \$3.15 |
| 30 OP042555-000 | BLADE SCREWS | .40 |
| 30 OP042555-500 | BLADE SCREWS (BLACK ELITE) | .66 |
| 31 OP044977-000 | TENSION SPRING | 3.26 |
| 32 OP042571-000 | BLADE GUIDE | .95 |

POWER PRO CLIPPER PARTS

| | | |
|-----------------|-------------|---------------|
| 33 OP048970-000 | DRIVE LEVER | \$3.08 |
| 34 OP084794-000 | DRIVE LINK | .77 |

POWERMAX PARTS

| | | |
|-----------------|-------------------|----------------|
| 35 OP118684-001 | Drive Assembly | \$21.50 |
| 36 OP116121-100 | Replacement Brush | 1.78 |

Remember We Are A Service & Repair Center
Need large quantities of parts?
Call for pricing! Please ask for Gary (ext. 231)



ConAir Turbo-Groom Parts CONAIRPET

| | | |
|-----------------|-------------------------------|---------------|
| 1. CAPFX690-03 | WORM GEAR | \$3.63 |
| 2. CAPFX690-04 | SWING ARM (LEVER) | .66 |
| 3. CAPFX690-08 | METAL ARM (LINK) | 1.98 |
| 4. CAPFX690-10 | PHENOLIC WASHER | .33 |
| 5. CAPPGRCB | BRUSH/SPRING SET | 4.60 |
| 6. CAPPGR68-01 | CORD 1 / 2 SPEED | 6.80 |
| 7. CAPFX690-13 | 1 SPEED SWITCH | 1.98 |
| 8. CAPPGR69-01 | 2 SPEED SWITCH | 2.00 |
| 9. CAPPGR68-02 | 1 SPEED HOUSING | 19.80 |
| 10. CAPPGR68-05 | FRONT COVE ASSY | 2.38 |
| 11. CAPFX690-14 | END COVER | 8.25 |
| 12. CAPFX690-12 | BRUSH COVER SET | .66 |
| 13. CAPFX690-15 | SCREWS/WASHER SET (Not Shown) | .99 |
| 14. CAPFX690-05 | BLADE SLOT ASSY (HINGE) | 2.77 |

ConAir Dyna-Groom Parts

| | | |
|-----------------|--------------------------------|--------------|
| 15. CAPFX687-10 | Hanger Hook | \$.35 |
| 16. CAPFX687-05 | Receptor Assy (Hinge) Complete | 3.19 |
| 17. CAPFX687-01 | Screw Assortment | .62 |
| 18. CAPFX687-04 | Drive Tongue | 3.59 |
| 19. CAPFX687-09 | Cord | 3.45 |
| 20. CAPPGR88-02 | Housing Complete (Purple) | 19.14 |
| 20. CAPFX687-02 | Housing Complete (Black) | 18.17 |
| 21. CAPPGR87-03 | Front Cap Assy | 2.24 |